

# Supply and Return Manifold Kits

## For Gems A & B Series Valves

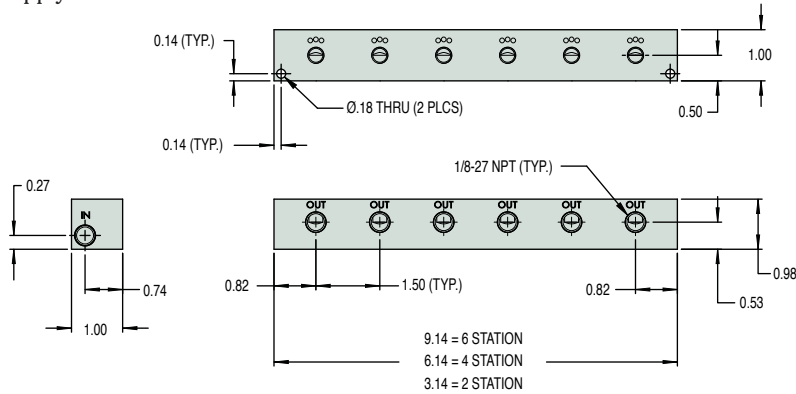
- ▶ 303 Stainless Steel
- ▶ 2-, 4-, and 6-Port Configurations

These 303 stainless steel manifolds can be used with any Gems manifold mount type A Series or B Series valves. Specify the "MM3" Body Port Configuration code when ordering valves to mate with these manifolds. To complete a manifold assembly please order a manifold below and then order the valves separately. You just screw the valves onto the manifold. If needed, a spanner tool for installing the valves is available in the Ordering Table below. Blank plugs to block off unused ports, with a variety of O-ring material options, are also available.

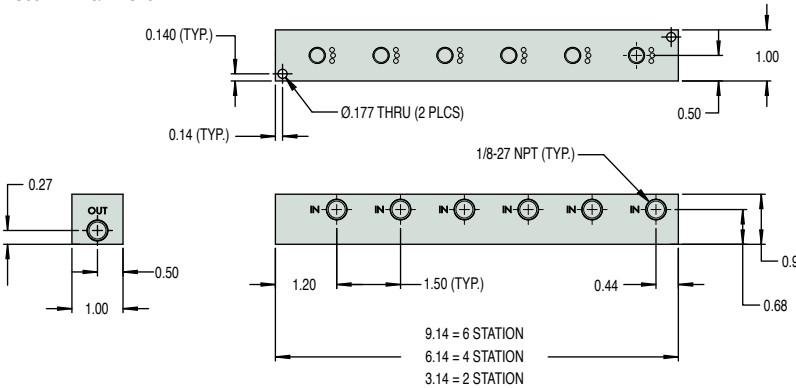
The supply manifold has a common supply inlet and discrete outlets. The return manifold has discrete inlets and one common outlet or return. The inlets connect to the outer holes on the manifold mounted valve while the outlets are connected to the center hole of the manifold mounted valves on both types of manifolds.

### Dimensions

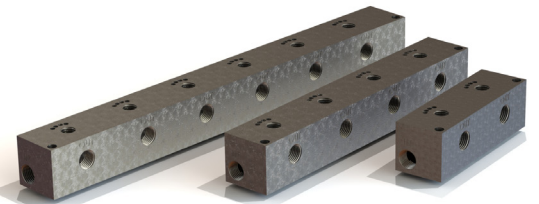
#### Supply Manifold



#### Return Manifold



4-Port Return 303 SS manifold. Pictured with Gems manifold mount solenoid valves—sold separately. Select from Gems A Series or B Series for use with these manifolds.



303 SS manifolds are available with either Supply or Return functionality in 2-, 4-, or 6-Port configurations.



Spanner Tool

Manifold Plug

Accessories for 303 SS manifolds include Manifold Plugs, with a variety of O-Ring seal materials, and the Spanner Tool used to install valves and plugs into the manifold.

### How To Order

Specify Part Number based on Supply/Return function (valves sold separately).

Valve Capacity	Part Number	
	Supply Manifold	Return Manifold
2 Valve	<b>2AB100</b>	<b>2AB000</b>
4 Valve	<b>4AB100</b>	<b>4AB000</b>
6 Valve	<b>6AB100</b>	<b>6AB000</b>

#### Ordering Example:

- 1x - M4AB100 (4-Port Supply Manifold)
- 4x - A2016-MM3-C204 (N.C., 1/8" orifice, 100PSI, A Series Valves)
- 1x - MFG-115 (Spanner Tool)

Fluid supply is common to all 4 valves. When any of the four valves is energized (opened) fluid will flow out through its discrete outlet port.

### Accessories

Description	Part Number
Spanner Tool (Recommended)	<b>MFG-115</b>

#### Manifold Plugs – Choose O-Ring Material

Nitrile O-ring	<b>252986-B</b>
EPR O-ring	<b>252986-E</b>
Viton® O-ring	<b>252986-V</b>
Neoprene O-ring	<b>252986-N</b>
Perfluoroelastomer O-ring	<b>252986-P</b>